

IVS-NET

Tools and Methods to Lead IVS Short-term Activities

PROJECT DESCRIPTION

METHODOLOGY:

The whole project will be based on non-formal education - **NFE methodology**. It will be proposed **learning by doing approach**, where each activity is based on specific learning objectives in order to better target the educational action and to ensure a coherent learning process of individuals and groups.

The **training course** is conceived to boost the participants' capacities and to share and experiment methodologies/approaches, within the non-formal education.

AIM:

To develop skills and competences to **become camp leaders** in international workcamps and short term **International Voluntary Service** projects.

TOPICS:



Group dynamics and group's functioning



Leadership and coordinator's role



Pedagogical approach in the work

PARTNER

LUNARIA

ITALY

CONCORDIA

FRANCE

ELIX

GREECE

GSM

TURKEY

IJGD

GERMANY

YRS-VSS

SERBIA

C
O
U
N
T
R
Y



Erasmus+

TIMELINE AND VENUES

ACTIVITY AND OBJECTIVES TRAINING COURSE

- to develop social competences and skills in the **group dynamics' management**
- to deepen the **coordinator's role** and reflect upon **leadership** in IVS projects
- to gain knowledge about the **pedagogical approach** to be proposed in the work, run inside workcamps
- to practically experiment the **life inside workcamps** and **short term voluntary service projects**

DATES

23th- 29th April 2024
(7 days of activities)

22th April: Arrival day
30th April: Departure day

VENUE

La Buona Terra

Passignano sul
Trasimeno (PG),
Italy

TARGET GROUPS

activists, volunteers,
youth workers and
camp leaders
(18+ aged)

GENERAL REMARKS:

The program of the TC includes **two main intensive workshop sessions**, one in the morning and one in the afternoon.

The agenda will not include a visit to the surrounding neighbouring cities.

TRAVEL COSTS AND REFUNDS

The travel costs are considered eligible only if the participants come from and return to the country of the sending organisation. Participants are expected to arrive on the official arrival day and leave on the official departure day of the project: late arrival (for example on the second day of activities) and early departure (for example, before the last day of the activity) are not allowed.

Moreover, participants, informing the organizations in advance, will have the chance to opt for the **green travel** using more sustainable and eco-friendly means of transport (train, buses and carpooling).

Participants will be refunded after the end of the mobility (training course, youth exchange, etc), upon the presentation of their travel documents.

The **refund process can take around 4-6 months** and it will be done directly to the sending organizations bank account, not to the participants' bank accounts.

IMPORTANT NOTE: Only for participants who choose the **Green Travel** option have 4 days of flexibility (arrival and departure days not included) to travel to the venue. They can manage in the most suitable way for them (e.g. 2 extra days before the official arrival + 2 extra days after the official departure day; 1 extra day before the arrival, 3 extra days after the departure day).

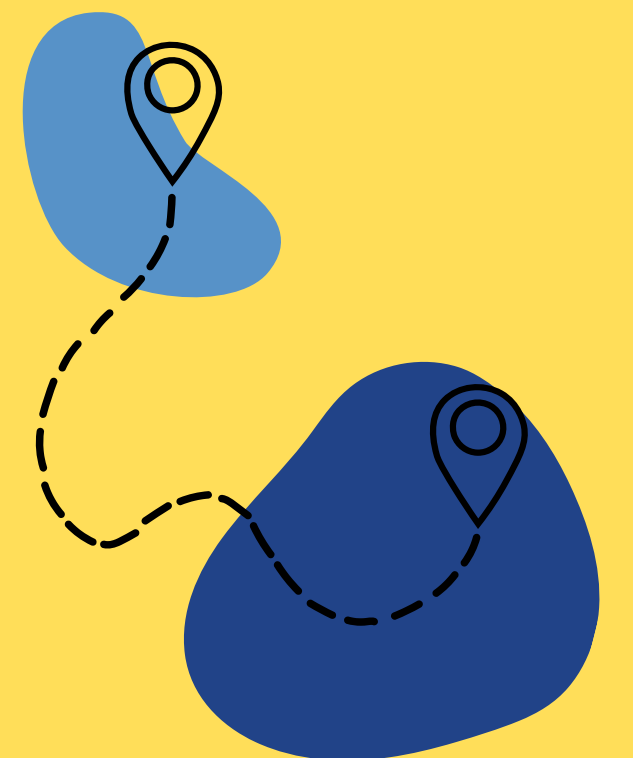
FINANCIAL CONDITIONS

TRAVEL COSTS for all the actions

TRAVEL DISTANCE	STANDARD TRAVEL	GREEN TRAVEL
• 100 - 499 km	180,00 €	210,00 €
• 500 - 1999 km	275,00 €	320,00 €
• 2000 - 2999 km	360,00 €	410,00 €

FOOD AND LODGEMENT COSTS for all the actions

Covered by the coordinating organization at 100%.



HOW TO PARTICIPATE

For sending your expression of interest, please contact the official partner in your country, that will provide you with all the necessary documents to be filled in.